



Enterprise Imaging Network Radiology

Networked, Not Overworked:

Grow Freely, Read Faster, Collaborate Seamlessly



That's life in **flow.**

AGFA 
HealthCare

AGFA HealthCare Enterprise Imaging Radiology Reading Practices in the USA



Network Radiology - Networked, Not Overworked: **Grow Freely, Read Faster, Collaborate Seamlessly**

As the global population ages and the demand for medical imaging intensifies, healthcare providers across the USA and beyond are increasingly turning to radiology practices to handle the growing volume of exam readings.

To meet this rising demand, radiology practices must scale their reading capacity without compromising the quality of care or the well-being of their radiologists.

Simultaneously, fostering a work environment that attracts and retains top-tier talent is crucial for sustaining long-term success.

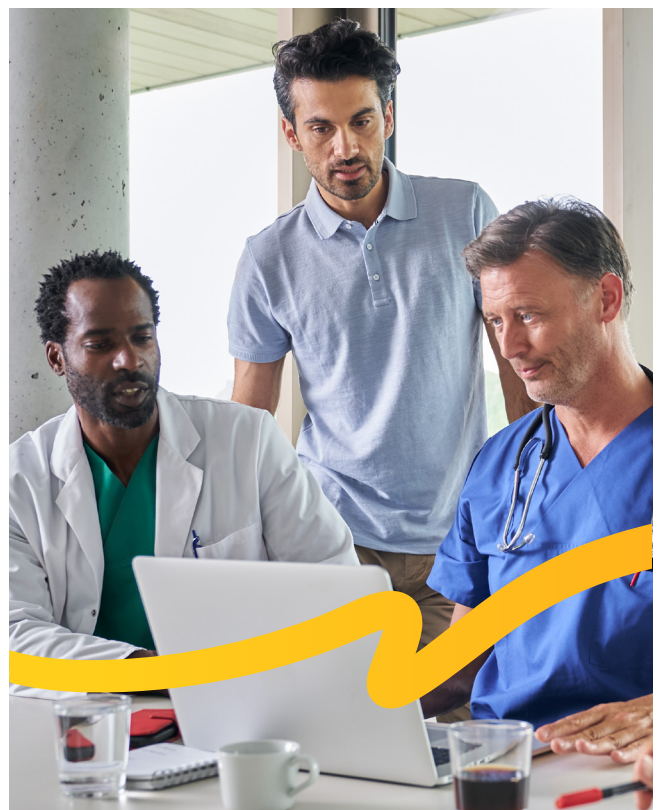
Pioneering, cutting-edge approach

AGFA HealthCare's Enterprise Imaging (AGFA EI) introduces a groundbreaking solution: **Network Radiology**.

Available as both a **Cloud SaaS** and an **On-Premises** deployable solution, this innovative approach addresses the inefficiencies and dissatisfaction caused by using multiple PACS and reporting systems, which have long plagued radiology practices.

Network Radiology empowers all radiologists in your practice to work at the pinnacle of their profession. By utilizing a centralized, blazing-fast web-streaming client and a unified reporting solution, radiologists can access any study from any customer serviced by the practice—whether on-site or remotely.

This seamless access supports consistent performance, regardless of location, and supports both staffed environments and teleradiology contracts.



Optimize the entire radiologist experience

AGFA HealthCare Network Radiology features native cross-customer workflow, workload balancing, and advanced next-generation web-streaming technology. These innovations streamline processes by eliminating the need to route studies from the customer's PACS to the practice's PACS before reading, significantly boosting performance, reducing costs, and simplifying networking and security. This approach also minimizes the size and expense of the practice's PACS infrastructure.

Moreover, AGFA EI's web-streaming technology allows your practice to engage top talent from across the country by removing barriers related to remote connectivity. This technology works equally well at a distance or locally, enabling a more flexible work environment that enhances the quality of life for your physicians.

By managing, controlling, and optimizing the entire radiologist experience, your practice becomes independent of your customers' radiology IT capabilities or commitment. AGFA HealthCare's Network Radiology approach enables radiologists to read any study from anywhere in a controlled environment, paving the way for increased capacity, job satisfaction, and the elusive balance of performance and quality of life that practices strive for.

Choose AGFA's Enterprise Imaging and discover how Network Radiology can transform your practice into a beacon for top radiology talent, setting new standards in efficiency and satisfaction.



10 good reasons to implement Enterprise Imaging in your Radiology Practice

- 1 Increase Capacity and Performance:**
Provide a unified, and optimized reading and reporting experience across all serviced health systems
- 2 Optimize Resource Utilization:**
Efficiently distribute cases and maximize the use of equipment and personnel, including supporting remote reading capabilities
- 3 Enhance Collaboration:**
Seamlessly connection with radiologists across multiple sites, enable efficient data sharing and integrate workflows.
- 4 Centralize Data Management:**
Unify patient records and imaging data, enhance data security, and reduce redundancy while supporting advanced analytics and best of breed AI integration.
- 5 Work Anywhere:**
Eliminate on-prem vs. remote reading performance discrepancies
- 6 Improve Compliance:**
Manage priorities practice-wide in a single orchestrated worklist
- 7 Leverage Technology Insulation:**
Reduce effects of customer environments on performance
- 8 Maximize Cloud Flexibility:**
Start with Cloud or transition to the cloud later, on your terms. The solution adapts to the growth of your radiology practice and supports flexible models to address connectivity challenges and radiology expertise
- 9 Harness the Power of Subscription Model:**
Comprehensive and easy to predict spending
- 10 Improve Delivery of Patient Care:**
Faster turnaround times and consistent, high-quality imaging and reporting across the network.



■ Empower Flow

With Enterprise Imaging, radiologists gain an exceptional and empowering experience that remains consistent regardless of their daily responsibilities, working location, or the healthcare system they are currently servicing.

The seamless integration of imaging technology eliminates the need to switch between different PACS and reporting systems, allowing radiologists to work more efficiently and stay in the flow, maximizing their potential without disruptions.

■ Improve Capacity and Efficiency

By eliminating reading silos and providing blazing-fast image access regardless of location, radiologist reading capacity and practice throughput can both be increased. This also shortens report turnaround times and enhances quality, helping to ensure compliance with customer service level agreements (SLAs).

These improvements help lead to better operational and financial outcomes while supporting the delivery of an exceptional patient experience.

■ Enhance Your Practice's Attractiveness

With AGFA EI's Network Radiology streaming overlay, your radiology service offering becomes significantly more appealing to health systems – either prospects and customers. As a practice utilizing EI Network Radiology, your clients can greatly reduce their imaging management responsibilities. They no longer need to provide Radiology PACS services and radiologist reading performance satisfaction; their primary focus can shift to producing high-quality images and metadata.

■ Teleradiology: No Barriers Across Geographies

Remote radiologists are a cornerstone of diagnostic imaging moving forward, enabling radiology practices to handle their ever-increasing reading volumes. With Enterprise Imaging, you can seamlessly work with radiologists wherever they are located. Each radiologist can read for all your customers, while maintaining maximum control over their work environment and schedule. And, the built-in orchestration capabilities allocates reading tasks to the most appropriate specialist. Radiologists are both more productive and happier, with a better work/life balance.

A powerful technology combination

Combining streaming, workflow orchestration, and federation technologies, Enterprise Imaging delivers true innovation for radiology practices.

Blazing Fast Web-Streaming Technology



The Enterprise Imaging [Web-Streaming Client](#) is a unique, revolutionary image display technology.

With its server-side streaming technology, Enterprise Imaging Streaming delivers blazing-fast performance both locally and remotely, up to 60ms away!

As a pure HTML5 viewer, it eliminates the need for managing remote installations at customer facilities or radiologists' homes. AGFA HealthCare's streaming technology replaces slow download-based viewing with state-of-the-art streaming, bringing the user directly to the data rather than transporting data to the user.

This approach enables even large studies to be displayed quickly, regardless of the radiologist's location. By eliminating delays, it allows radiologists to access and interpret large studies with exceptional efficiency, whether scheduled or ad-hoc.

Enterprise Imaging Streaming Client enhances productivity and enables swift readings from any location.

Workflow Orchestration



At the core of Enterprise Imaging is the [RUBEE® Orchestrator](#), a transformative work assignment technology that revolutionizes how enterprise and cross-organizational medical imaging worklists are managed.

RUBEE® Orchestrator takes the complexity out of study assignment and distribution by creating shift-based curated work lists for each individual radiologist, addressing long standing distribution and contact turn-around compliance management issues that traditional worklists simply can't solve.

With RUBEE® Orchestrator, you gain unparalleled control over who reads each study, when, and where. The system intelligently 'pushes' tasks to radiologists based on your specific assignment criteria—such as shift schedules, coverage, and study characteristics —dramatically enhancing throughput and efficiency. By eliminating the cumbersome process of managing multiple reading lists, it reduces wasted overhead, streamlines workflow.

Transform your practice with the power of RUBEE® Orchestrator and gain improvements in efficiency and radiologist satisfaction.

Connect with More Healthcare Systems

Enterprise Imaging's powerful support for teleradiology frees you to work with more healthcare systems, regardless of their location.

You can deliver full-service 24/7 or shift-based coverage, for all types of studies, with fast report turnaround, across a much broader geographical area.

Cloud-ready When you are Ready

Ready to manage the unexpected, reduce complexity, enhance the radiologist's experience, and increase your own cost control and predictability? Enterprise Imaging is also available as a full SaaS Cloud solution. [Enterprise Imaging Cloud](#) includes updates and upgrades, managed infrastructure and managed service, giving you the freedom to keep your focus where it belongs: on your radiologists and health system customers.



Federation + Orchestration + Streaming = Something Completely New

AGFA HealthCare's Enterprise Imaging is dedicated
to helping radiology practices achieve more with less.

Our EI Federation technology is a cutting-edge real-time system aggregator that allows radiologists to dynamically access reading tasks and imaging data from any PACS without manual intervention and without cost intensive prefetching or routing. This is ensured by transparently accessing the federated PACS systems through a web-streaming EI Renderelement.

This technology enhances turnaround times, provides improved patient imaging history visibility, reduces cost of the Practice PACS, and eliminates the labor and costs associated with image exchange between affiliated partners.

Key Benefits of the Federated Streaming Architecture

- **Seamless Cross-Site Operations:**
Support for seamless operations across different sites, allowing radiologists to access and interpret images from any location within the network.
- **Consistent User Experience:**
A consistent, high-quality viewing experience across all devices and locations, regardless of the size or complexity of the imaging study.
- **Real-Time Collaboration:**
Enabling radiologists and other healthcare professionals to collaborate in blazing fast speeds, and reporting on imaging studies on a single user interface, regardless of where the data is stored, facilitating better-informed clinical decisions.

Further Advantages of Federation Technology

- Reading all customer studies using a practice-provided client without routing data.
- Reporting all studies on a single reporting tool.
- Virtualizing the entire practice with a central orchestrated worklist, regardless of location (e.g., client facility, office, or home).
- Ensuring that the Radiologist experience is managed by the practice, independent of customer-provided PACS systems.

THE ENTERPRISE IMAGING PLATFORM



=

STREAMING



+

ORCHESTRATION



+

INTEGRATED NETWORKS



Transform Your Radiology Practice

AGFA HealthCare Enterprise Imaging is a game-changing solution for modernizing radiology practices. Combining rapid web-streaming viewing, native workflow orchestration, and unique cross-enterprise federation, it addresses long-standing challenges and accelerates radiology practices to reach their full potential.

Contact us today to discover how AGFA HealthCare Enterprise Imaging can revolutionize your practice: enterpriseimaging@agfa.com

Get in Touch



AGFA, the AGFA rhombus, and the AGFA HealthCare logo are trademarks of Agfa-Gevaert N.V., Belgium, or its affiliates. The Enterprise Imaging Platform logo, RUBEE, That's life in flow are trademarks of AGFA HealthCare N.V., Belgium or its affiliates. All rights reserved. All other trademarks are held by their respective owners and are used in an editorial fashion with no intention of infringement. The data in this publication are for illustration purposes only and do not necessarily represent standards or specifications that must be met by AGFA HealthCare. All information contained herein is intended for guidance purposes only, and the characteristics of the products and services described in this publication can be changed at any time without notice. Products and services may not be available for your local area. Please contact your local sales representative for availability information. AGFA HealthCare diligently strives to provide as accurate information as possible but shall not be responsible for any typographical error.