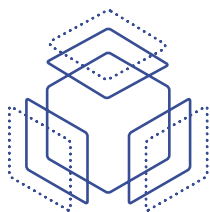




AGFA HealthCare Enterprise Imaging

Empowering Imaging Without Barriers



That's life in **flow.**

AGFA 
HealthCare

In the dynamic landscape of modern healthcare, health systems are continuously expanding, forming new partnerships, accommodating rising patient volumes and workloads, and embracing innovative technologies. These developments place an unprecedented demand on staff, resources, and infrastructure.

However, amidst these challenges lies an opportunity to **reduce complexity, improve clinical collaboration, and enable workflow efficiencies** – ultimately paving the way for enhanced operations and superior patient care.

For over 100 years, AGFA HealthCare has been a respected leader in innovation. Three decades ago, our IMPAX® PACS revolutionized the management of imaging in care delivery.

A Complete Picture

AGFA HealthCare Enterprise Imaging (AGFA EI) meets the challenges of today's modern health system with one of the first true medical imaging management platforms.

Additionally, AGFA EI seamlessly integrates and embeds into an Electronic Health Record (EHR) system like Epic and Cerner creating an [Imaging Health Record™](#) (IHR).

With an IHR, Health Professionals across specialties and geographies benefit from access to a comprehensive and historical view of their patients' imaging history – expediting image access while optimizing system efficiency and performance.

Today, the AGFA HealthCare Enterprise Imaging Platform continues to uphold this legacy of pioneering excellence with a solution that not only incorporates cutting-edge technology but also empowers organizations to achieve their goals and unlock their full potential.



Viewing Patients' Imaging Health Record™ in your Electronic Health Record

For Health Professionals

- One view for all patient information – imaging and otherwise
- A linear view of imaging history across modalities
- Streamlined workflows by staying within the system already being used
- Eliminates the need to learn a new software application
- Improves access to longitudinal patient record without the need of multiple viewers

For IT Professionals

- Reduced infrastructure and bandwidth needs
- Train, manage, and monitor fewer systems
- Save costs to allocate toward strategic growth initiatives
- Consolidation of platforms reduces security risk/exposure
- Less housekeeping in terms of device-by-device software updates

The Power of an Imaging Health Network™

Bringing together multiple IHRs, AGFA HealthCare Enterprise Imaging enables a community of care through a seamless, and secure [Imaging Health Network™](#) (IHN). Here, information flows effortlessly, enabling every member of your care team to access data regardless of their location or the time of day.

A Connected Care Community

For Health Professionals

- Tap into resources across specialties, care centers, geographies, and more regardless of software or platform their organization uses
- Connect multiple IHNs to tap into additional enterprises
- Patient information is consolidated for a more longitudinal view
- Maximize resources, regardless of geography, to deliver confident clinical decisions

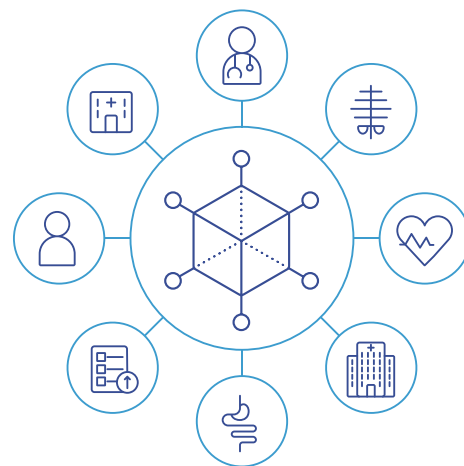
For IT Professionals

- Reduce cross-system, cross-software complexity via a single, central platform
- Acquire images from newly acquired health systems and/or new affiliations with a few simple clicks
- Make images readily available on workstations and a wide variety of mobile devices
- Reduce security exposure and friction inherent in clinical teams collaborating in disparate systems

By providing your team with a comprehensive view of every patient's imaging history, regardless of the provider responsible for it, AGFA EI allows everyone in your health system to concentrate on what matters most: delivering excellent patient care.

From physicians and radiologists to executives and IT staff, our seamless platform simplifies imaging workflows and liberates your team from the burden of data management.

[Learn More About the IHN](#)



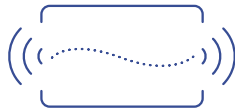
“It’s really nice for all of our providers to have one system. What we do affects our patients. Being able to make sure that our Radiologists have quick access to those images to be able to provide reads to effect treatment is very satisfying work.”

Jasmine Holloway
Senior IT Application Analyst
Sparrow Health System, USA

[Read the Case Study](#)

Streaming Simplifies

AGFA HealthCare Enterprise Imaging Streaming Client brings the concept of streaming to imaging.



Our web-based, one-click approach displays information in near real-time by eliminating the need to move data to users, saving valuable time and effort. Instead, we stream the pixels to you when and where you need them.

Enterprise Imaging Streaming Client operates with remarkable flexibility and at the pixel level. It requires no extensive infrastructure or high-powered GPUs, making it accessible with only an internet connection and a compatible web browser.

It transcends the confines of operating systems, catering to diverse setups and facilitating seamless integration.

“The EI platform allows us the tools and mechanisms to communicate better with our colleagues to improve patient care.”

Jay P. Patel, MD

Diagnostic Radiologist – Breast and Musculoskeletal Imaging – Breast Imaging Section Chief – Quantum Radiology

Reading for Wellstar Health System, USA

[Read the Case Study](#)

The World of Streaming

For Health Professionals

- Access studies seamlessly
- Fast image generation reduces loading times between reads
- Experience like with a high-performance desktop application.
- Perform remote reading from virtually anywhere, allowing unprecedented flexibility
- Collaborate in real-time with other members of the care team – regardless of enterprise affiliation
- Display any image from any storage location within the Imaging Health Network™
- Access studies virtually anywhere with the click of a button
- Integration with your Electronic Health Record (EHR) grants you access to imaging directly in the patient's record

For IT Professionals

- Experience true zero-footprint application – No downloads. No installs. No plugins.
- Significantly reduce IT infrastructure demands
- CPU-based rendering eliminates the need for expensive GPU servers or client-side GPUs
- Dramatically reduce IT costs related to client management, installations, and downloads
- Eliminate slowdowns from integrations and enable affiliates everywhere
- Save time supporting applications with many use cases on one application
- Free up valuable time for developing IT strategies that align with business goals
- Compatibility with Mac and PC to accommodate user preferences

[Learn More About Streaming Client](#)

Enterprise Imaging RUBEE® Orchestrator: A Workflow That Works

In addition to the extensive and powerful workflow technologies that are already part of the AGFA HealthCare Enterprise Imaging Platform today, starting with version 8.3, AGFA EI boasts an invaluable tool - Enterprise Imaging RUBEE® Orchestrator - to unlock enhanced efficiency: [Workflow Orchestration](#).

This intuitive system will orchestrate your tasks with smart hanging protocols and tailored workflows that align with your preferences and offer a federated view across multiple locations.

With Workflow Orchestration, you will be in the driver's seat, gaining additional control over your work processes. It will empower you to optimize productivity, streamline operations, and devote more time to providing patient care.



Enterprise Imaging RUBEE® Orchestrator

For Health Professionals

- Supports the strategy of the right study going to the right team member
- Retain your flow by conducting studies by group (e.g., body part, modality, etc.)
- Get a fair and balanced workload for each team member based on pre-determined criteria (e.g., length of shift)
- Make use of hyper-specialized team members by routing studies based on specialty
- Make informed decisions around workflow optimization and enhancements

For IT Professionals

- Incorporate and account for multiple PACS (even 3rd party) in one system
- Create custom dashboards to share relevant information with a wide range of stakeholders
- Customize as little or as much as needed to achieve clinical, financial, and organizational goals
- Gain autonomy over your workflow with an easy-to-adopt interface

[Learn More About RUBEE® Orchestrator](#)

“The biggest change for the radiologists when Enterprise Imaging was implemented was in the workflow. With the platform, we can drive the workflow in a much more granular way. The radiologists appreciate that it ‘feeds’ them what they need, sorts tasks to their preferences, enables them to prioritize studies, supports escalation of care, and more.”

RJ Merck
Radiology IT Supervisor
Zuckerberg San Francisco General Hospital, USA

[Read the Case Study](#)



A Solution That Grows with You

As you scale up to serve more patients, add more providers, and acquire or work with new sites, AGFA HealthCare Enterprise Imaging can grow with you. We're committed to working with you to meet the opportunities and challenges of modern healthcare.

Embrace the power of the Imaging Health Network™, experience the efficiency of Streaming technology, transcending geographical boundaries, and offer seamless access to critical data.



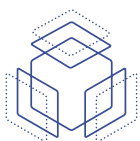
**Enterprise
Imaging
Platform**

Are you prepared to streamline workflows and amplify your team's efficiency?

**Take the first step toward revolutionizing your healthcare journey
with AGFA HealthCare Enterprise Imaging.**

We can't wait to team up with you.

[Get in Touch](#)



**Enterprise
Imaging
Platform**



AGFA 
HealthCare

AGFA and the Agfa rhombus are registered trademarks of Agfa-Gevaert N.V. Belgium or its affiliates. Imaging Health Network is a trademark of AGFA HealthCare N.V. or its affiliates. All rights reserved. All information contained herein is intended for guidance purposes only, and characteristics of the products and services described in this publication can be changed at any time without notice. Products and services may not be available for your local area. Please contact your local sales representative for availability information. AGFA HealthCare diligently strives to provide as accurate information as possible but shall not be responsible for any typographical error