



Enterprise Imaging,
driving clinical confidence

Enterprise Imaging for Radiology

On the frontlines of healthcare

AGFA 
HealthCare

How does Enterprise Imaging:

- provide the tools you need to foster confidence and professional satisfaction among your staff?
- keep your finger on the pulse of day-to-day operations?
- help you create a continuous quality improvement and learning environment?



A unified platform supporting clinical confidence along the care continuum

Enterprise Imaging is designed for clinical productivity, delivering fast access to your patients' clinical imaging data in context, across sites and domains. By enhancing workflow and collaboration between peers and colleagues, it supports informed decision making and treatment planning. Your relationships with referring physicians and clinicians are stronger, while increased work satisfaction creates a healthier and more attractive work environment.

Keeping your staff on target and satisfied

With the **rules-based workflow engine**, tasks automatically flow to you and your staff, so that staff are aware of their assigned tasks– in real time. You stay on top of tasks and can organize your time and effort in the most effective way.

At-a-glance dashboards of day-to-day operations keep all professionals aware of the status of events: scheduled, being worked on, or waiting for completion. You can confidently manage your department and staff: booking meetings, doing research, etc. without decreasing departmental efficiency.



"Having such a sophisticated radiology system definitely helps to attract talent – you have the right team and the right equipment to enable them to do their job in the best possible way."

Insight into your operations for better-informed decisions

Enterprise Imaging puts tools and data for productivity analysis, workflow analysis and quality control reports at your fingertips. **With insight into your operations, you can make better-informed decisions, improve clinical productivity and operational quality, optimize resource allocation, and increase the satisfaction of patients and referring physicians.**

Learning environment helps improve quality

Your department becomes a learning facility, in several ways. Sharing and feedback among peers, and quality control tools, facilitate continuous improvement for your processes. When incidents do occur, they can be traced, and the root causes determined and solved.

Not only does this help your department deliver better care, but it supports you to meet the requirements for various quality assurance accreditations and certifications. Your department thus plays an important role in maximizing your hospital's quality ranking.

"Staff are now more responsive and productive, which improves their work and, potentially, their attention to detail. This increases job satisfaction, helping with staff attraction and retention."

"Staff were working flat-out to stay on top of the work. With Enterprise Imaging, they eliminated the backlog in only a few weeks, and can now report the cases 'live' while the patients are still at the hospital."

"When physicians, practitioners and other hospital providers are able to see beyond the EHR, into a more visual world, it supports better delivery of care, and better clinical practice."



Features that generate confidence

Enterprise Imaging creates an imaging ecosystem that helps you to support clinical confidence, with features and tools including:

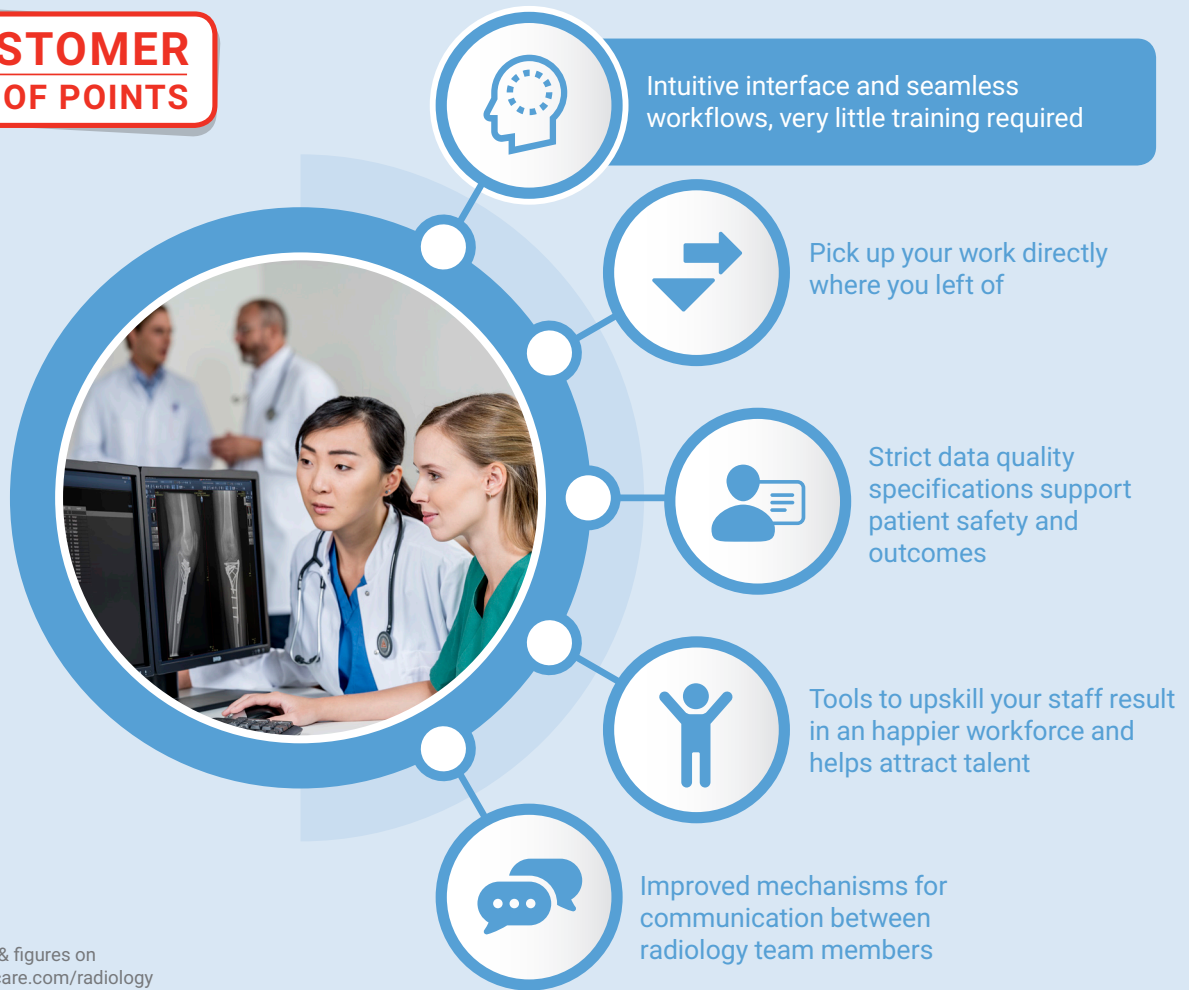
Streamlined workflow:

- With the rules-based workflow engine, professionals stay informed of departmental activities and task-based needs.
- Reporting is fast, easy and personalized, and the results can be distributed via print, email, web or on the electronic medical record.
- The Live dashboard gives you a real-time view of the department's operations and performance, and provides actionable information to resolve any bottlenecks.

Intelligent, confident reporting:

- The consistent and predictable workflow, supported by the machine learning-based display protocols, creates a confident reading and reporting environment.
- By using the built-in, advanced clinical and measurement tools, you and your staff save time and effort in reporting, even as workloads increase.
- You and your diagnosticians can access images and write reports from the hospital or remotely, for greater satisfaction.

CUSTOMER PROOF POINTS



More facts & figures on
agfahealthcare.com/radiology

Peer-to-peer learning:

- The peer-to-peer learning workflow allows you and your staff to analyze, rate and discuss reports created by your peers. You can improve the diagnostic accuracy of future reports, while meeting requirements for data privacy and confidentiality.
- You, your staff and your peers can share interesting cases, reveal gaps in procedures that you can then address, uncover learning opportunities from studies, and enhance risk management.

Real time exchange of information and collaboration:

- The unified Enterprise Imaging platform provides real-time exchange of information.
- Easy-to-use collaboration, chat, and sharing functions enhance cooperation with peers, referring physicians and other institutions.

Quality control:

- Workflow analysis and quality control reports support the delivery of high-quality and efficient patient care.
- By tracking incidents, and uncovering and solving the root problems, you create a continuous improvement loop.





"Live reporting enables radiographic errors to be detected before patients leave the hospital, saving them from a return trip to repeat the scan and reducing the administrative burden of recalling them. Furthermore, if you detect something that needs immediate treatment, the patient is still there and can be admitted straight away."



Find out more about how to inspire clinical confidence, driven by Enterprise Imaging!
Contact your Agfa HealthCare representative for more info

Agfa and the Agfa rhombus are trademarks of Agfa-Gevaert N.V., Belgium, or its affiliates. Agfa HealthCare NV, Belgium or its affiliates. The data in this publication are for illustration purposes only and do not necessarily represent standards or specifications, which must be met by Agfa HealthCare. All information contained herein is intended for guidance purposes only, and characteristics of the products and services described in this publication can be changed at any time without notice. Products and services may not be available for your local area. Please contact your local sales representative for availability information. Agfa HealthCare diligently strives to provide as accurate information as possible, but shall not be responsible for any typographical error.

AGFA 
HealthCare